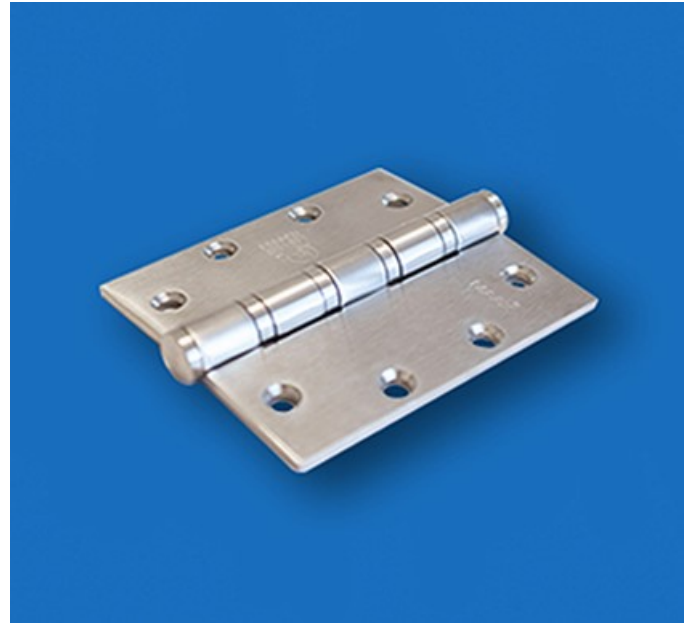


## Model: H199BB - Heavy Weight

### STANDARD FEATURES

- Full mortise type hinge, heavy weight, five knuckle, four ball bearings (4BB)
- UL/cUL Listed for 3 hours fire rating
- Conforms to ANSI/BHMA A156.1
- Meets ANSI/BHMA A156.7 requirements for template hinge dimensions
- Stainless steel leaf, pin, bearings, head and screws
- Standard 304 stainless steel
- Packed with machine screws (12-24 X 1/2" FHMS) and wood screws (12 X 1-1/4" FHWS)
- Finish: US32 (629) bright stainless steel, US32D (630) satin stainless steel
- Warranty: Limited 10 years



### OPTIONAL FEATURES

- 316 stainless steel
- NRP Non removable pin

### HINGE SIZES

MODEL	SKU	SKU WITH (NRP)	SIZE	FINISH	BALL BEARINGS
<b>H199BB</b>	H199BB-4540	H199BB-4540-NRP	4.5" X 4.0" X .180" (4.6mm)	- US32 (629) Bright stainless steel - US32D (630) Satin stainless steel	4 BB
	H199BB-4545	H199BB-4545-NRP	4.5" X 4.5" X .180" (4.6mm)		
	H199BB-5040	H199BB-5040-NRP	5.0" X 4.0" X .180" (4.6mm)		
	H199BB-5045	H199BB-5045-NRP	5.0" X 4.5" X .180" (4.6mm)		
	H199BB-5050	H199BB-5050-NRP	5.0" X 5.0" X .180" (4.6mm)		

