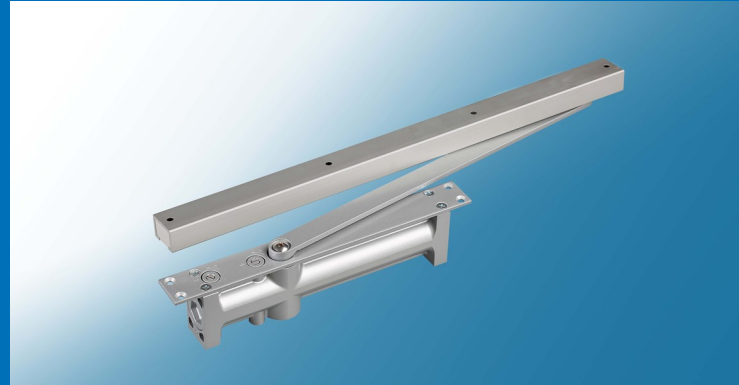


C2200 Door Closer

Sized Model:
C2230



MAAX C2200 Series concealed closer provides the ultimate economic solution, yet durable and reliable, for openings where aesthetic and security installation is required. The C2200 closer offers compact design and is ideal for smaller door openings in commercial and residential applications.

STANDARD FEATURES

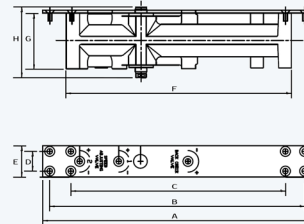
- UL/cUL Listed for 3 hours fire rating
- UL 10C positive pressure
- Sized model: C2230 (Size 3)
- Aluminum body and sliding arm track
- Rack and pinion mechanism
- Needle bearing for high efficiency
- Closer body can be concealed in door or in the frame head
- Non handed installation
- Maximum opening 110°
- Door thickness 1 3/4" minimum
- Adjustable sweep and latching speeds
- Finish: (ALUM) Aluminum
- Warranty: Limited 5 years

OPTIONAL FEATURES

- Backcheck (BC)
- Hold open track (for non fire rated doors)



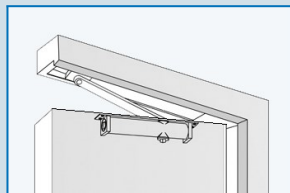
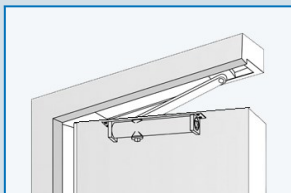
DIMENSIONS



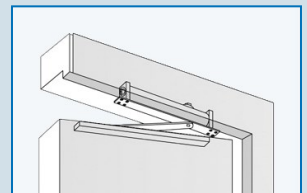
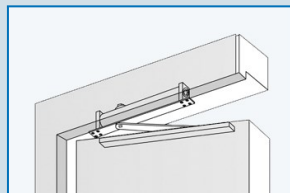
| | |
|-------|-----------------|
| (A) | 10 7/8" (275mm) |
| (B) | 10 1/4" (260mm) |
| (C) | 8 5/8" (219mm) |
| (D) | 3/4" (20mm) |
| (E) | 1 1/4" (31mm) |
| (F) | 9 1/16" (230mm) |
| (G) | 2 1/4" (57mm) |
| (H) | 3 1/32" (77mm) |

INSTALLATIONS

Closer Body Concealed in the Door



Closer Body Concealed in the Frame Head



SELECTION GUIDE

| Closer Size | Maximum Door Width | | | Maximum Door Weight |
|-------------|--------------------|-------------------------|--------------------------|---------------------|
| | Interior Door | Exterior Door (Inswing) | Exterior Door (Outswing) | |
| 3 | 40" (1016mm) | 30" (762mm) | 36" (914mm) | 45-65 (KGS) |